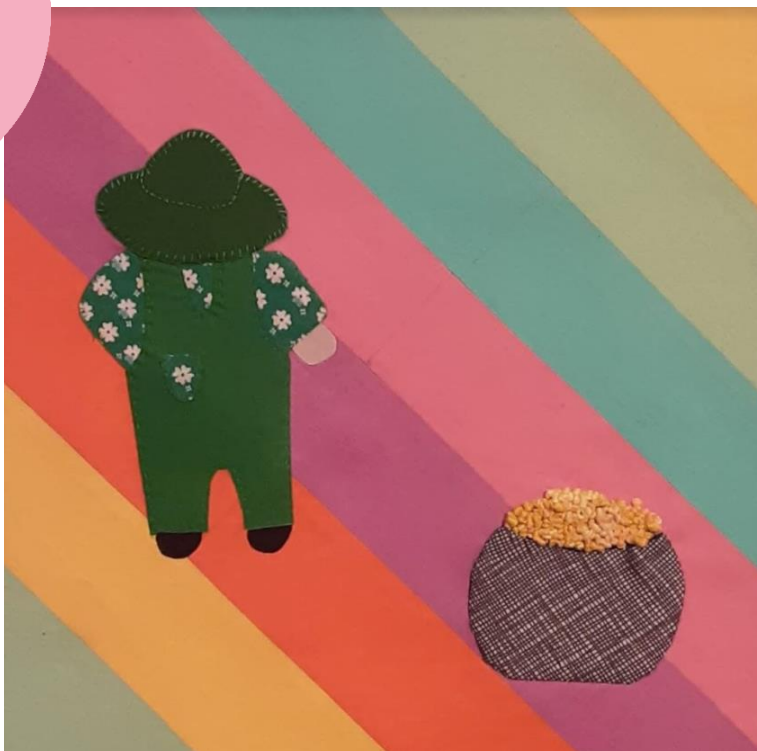


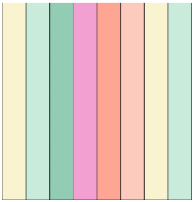


Sam's Pot of Gold

Designed by: Sarah Marcina



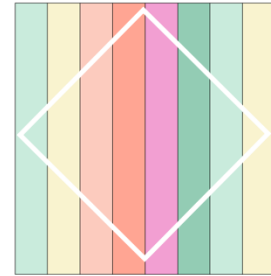
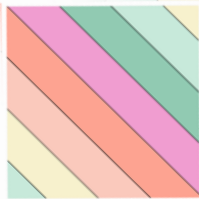
Color A	Two (2) 2 ½" x 15" strip
Color B	One (1) 2 ½" x 15" strip
Color C	One (1) 2 ½" x 15" strip
Color D	One (1) 2 ½" x 15" strip
Color E	Two (2) 2 ½" x 15" strip
Color F	One (1) 2 ½" x 15" strip
Green	Scraps
Gold	Scraps
Black	Scraps



1. Sew the 2 ½" x 15 ½" fabric strips together, resulting in a 16 ½" x 15" rectangle.

2. Using a 12 ½" square template, place on rectangle centered on the diagonal.

Trim the edges, resulting in a 12 ½" x 12 ½" square



3. Cut out the applique pieces. Add a quarter inch if you desire to turn the edges under. If you are using fusible webbing, follow the package instructions. When printing the templates, make sure to print at 100%.

4. Place the pieces on the 12 ½" x 12 ½" block and adhere in proper places.

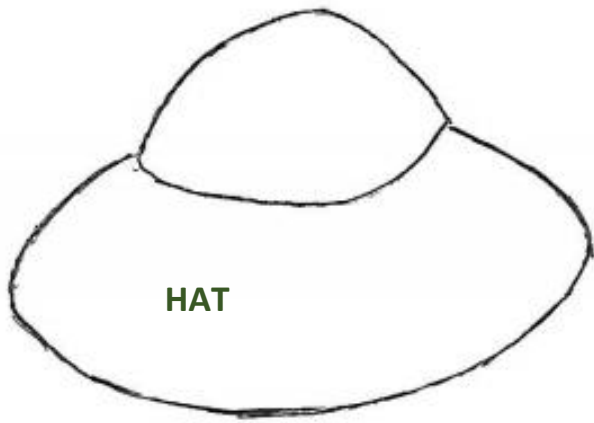
Order of Application for Sam:

1) Shirt 2) Shoes 3) Overalls 4) Hand 5) Hat 6) Pocket

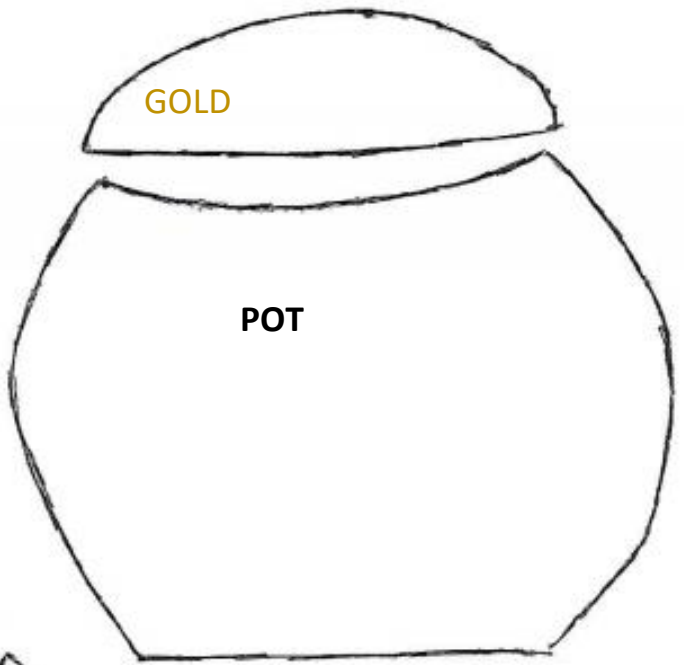
Order of Application for Pot of Gold:

1) Gold 2) Pot

OPTIONAL: Embroidery French Knots for the gold.

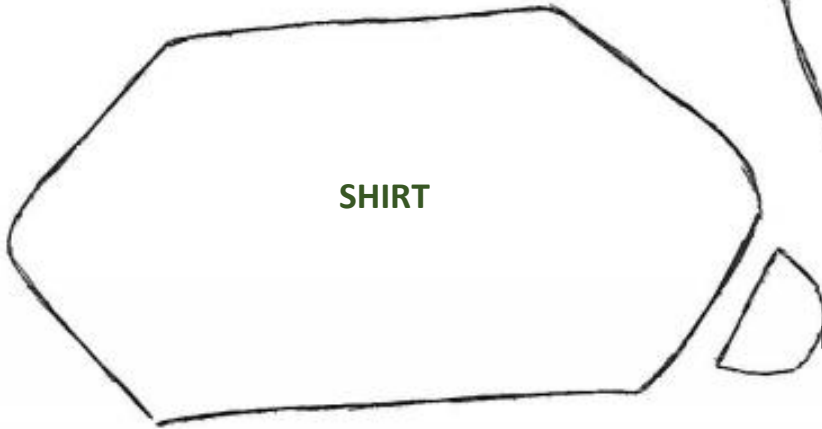


HAT



GOLD

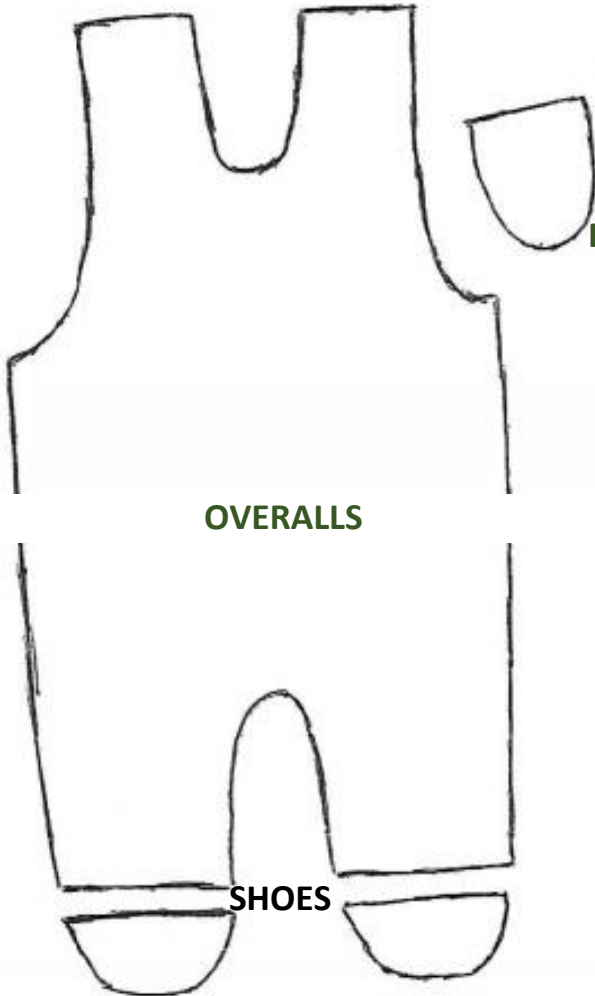
POT



SHIRT



HAND



POCKET

OVERALLS

SHOES