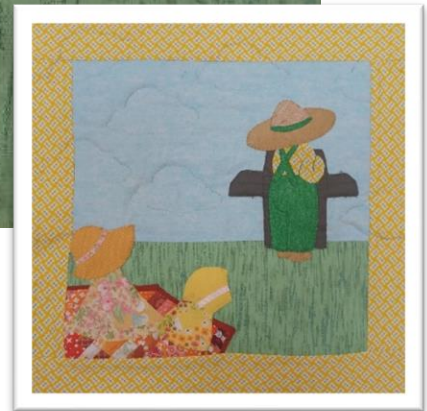


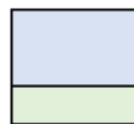
Labor Day Picnic

Designed by Sarah Marcina



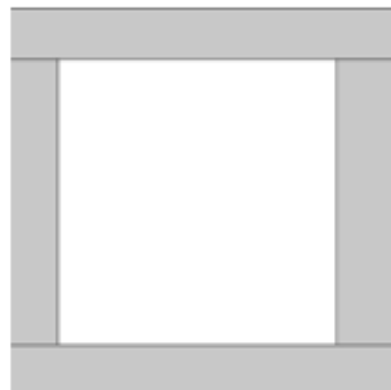
Sky	7 ½" x 12 ½"
Grass	5" x 12 ½" rectangle
Scraps	Sunbonnet Sue; Sam; Girl; Quilt; Grill

1. Sew together the Sky & Grass fabric, resulting in a 12 ½" x 12 ½" square.



Optional: If you are going to make the Sunbonnet Quilt (a block of the month quilt via Quilt Block Mania), sew the border on the 12 ½" x 12 ½" block prior to appliqueing.

For the border you will need two (2) 2 ½" x 12 ½" and two (2) 2 ½" x 16 ½" strips of fabric coordinating with the block. Sew the 2 ½" x 12 ½" strips onto the sides of the quilt block, press as desired. Sew the 2 ½" x 16 ½" strips to the top and bottom of the block. The block measures 16 ½" x 16 ½".



2. Cut out the applique pieces. Add a quarter inch if you desire to turn the edges under. If you are using fusible webbing, follow the package instructions. When printing the templates, make sure to print at 100% not "fit to page."

3. Place the pieces on the 12 ½" x 12 ½" block and adhere in proper places. The best order of application is as follows:

- 1) Grill 2) Quilt 3) Sam 4) Sue 5) Girl

